



XGA16ACE

MOBILE ELEVATING WORK PLATFORM

Comply with AS/NZS/ANSI/CE



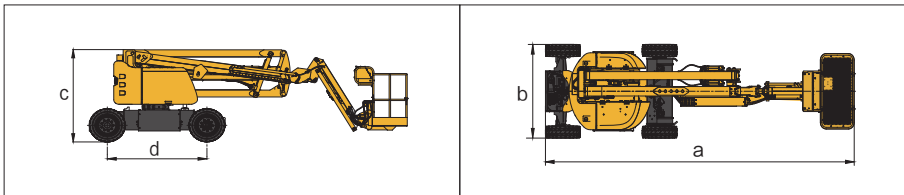
XGA16ACE

MOBILE ELEVATING WORK PLATFORM

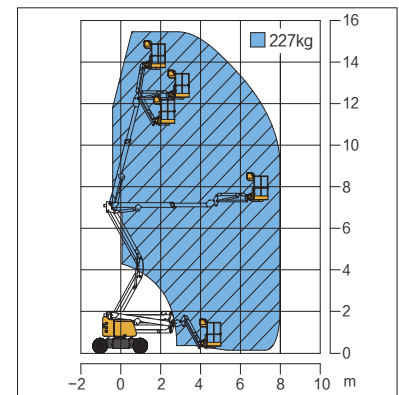
Main Features

- Multiple function controls improve operating efficiency
- Proportional drive, lift and lowering for smooth operation
- AC electric-drive walking, longer working hours
- Various accessories & options(Airline, AC power, Lithium battery, Non-marking/Foam tire, etc.)
- Zero tailswing, zero emission and quiet operation make the machine of choice for indoor applications

Product Parameters



Work Curve Graph



Item	Unit	XGA16ACE
a Overall Length	mm	6420
b Overall Width	mm	1750
c Overall Height	mm	2000
d Wheel Base	mm	2010
Max. Working Height	m	15.8
Max. Platform Height	m	13.8
Max. Working Range	m	8
Max. Load Capacity	kg	227
1st Boom luffing Range	°	0~+60
2nd Boom luffing Range	°	-8~+75
Fly Jib Luffing Range	°	-60~+80
Rotation Angle of Turntable	°	355
Max. Tail Wagging	mm	0
Platform Size	mm	700×1400×1150
Rotation Angle of Platform	°	160
Total Weight	kg	6500
Max. Travel Speed	km/h	5.2
Mini. Turning Radius	m	3.15
Mini. Ground Clearance	mm	210
Max. Grade Ability	%	30
Tire Specification	-	250-15 / 240/55D17.5 / 250-15/7.00
Engine Model	-	-
Rated Power of Engine	kW/(r/min)	-

XCMG Australia

Head Office: XCMG Mining Equipment Australia Pty Ltd

Tel: 04 1159 1394

Sales Email: royrossini@xcmg.com duhui2@xcmg.com

Add: Level 10 185 Victoria Square, Adelaide SA5000